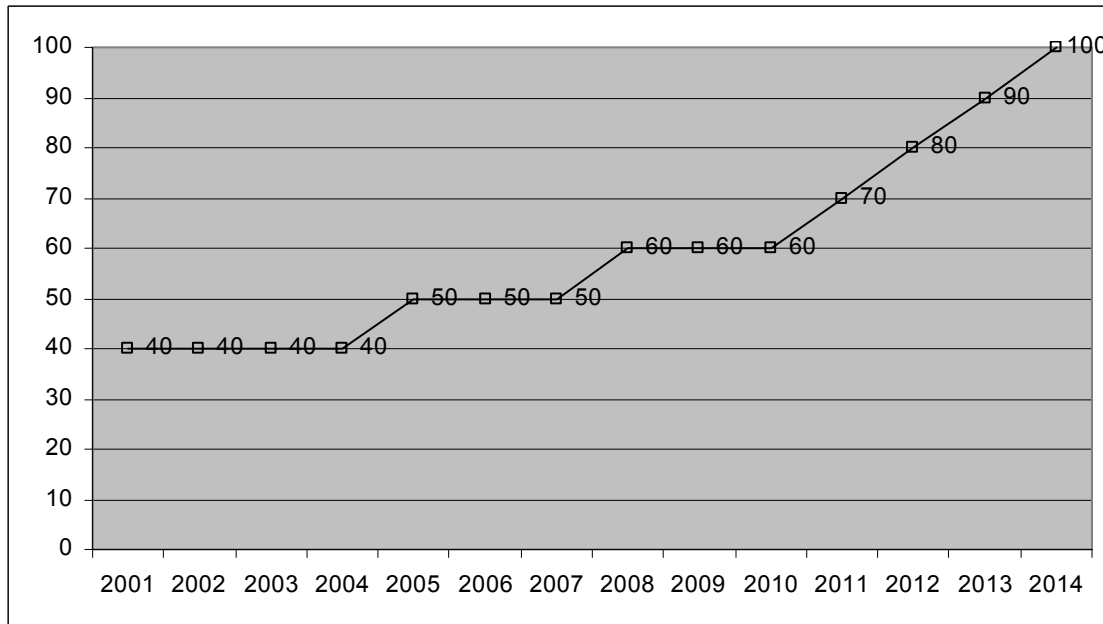


Meeting AYP by 2014



Hypothetical School I: Whole School AYP; Wisconsin

Reading proficiency benchmark = 40%; Student enrollment = 500

Adequate Yearly Progress with annual intermediate goals: www.dpi.state.wi.us/dpi/esea/pdf/wiaw.pdf

Moving subgroups to proficiency

<i>Students in subgroup</i>	<i>Moved to proficiency in 2004</i>	<i>Moved to proficiency in 2005</i>
120	48	60
60	24	30
90	36	45
130	52	65
100	40	50
Total: 500	200	250

50 students must be moved to proficiency by end of 2005

Subgroups must meet proficiency levels at same rate as whole school (exception: Safe Harbor Provision)

Reading Together Builds Capacity, Moves More Students to Proficiency

Extends Your Reach: Target two groups of 30 tutor/tutee pair per semester, or 120 students per year (tutees and low-performing tutors)

Demonstrates Measurable Results: 87.5 average success rate at program completion

The Result: 105 students moved to AYP by End of Grade